



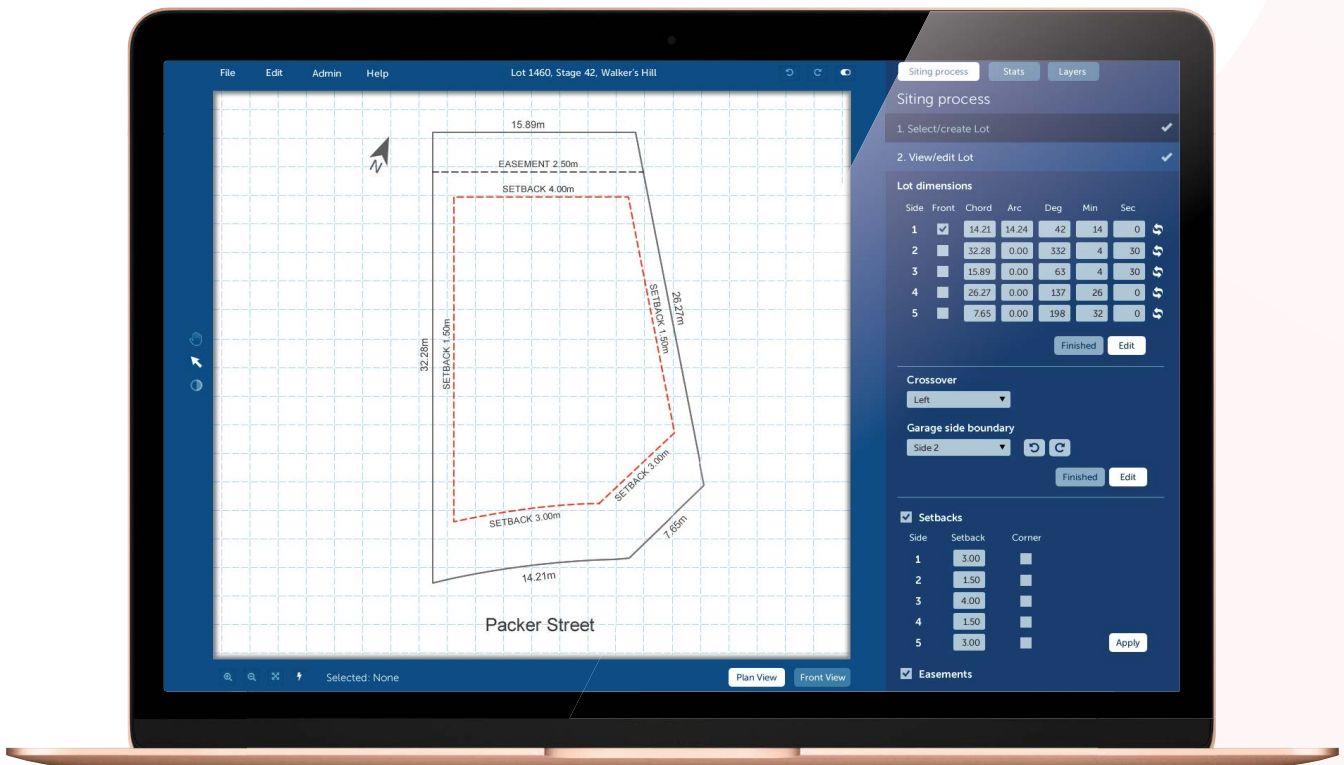
# Lot and Load



Lot and Load eliminates manual data entry of land dimensions, land covenants and design guidelines. Lot and Load uses artificial intelligence to translate plan data ready for home siting and home and land package automation.

## Lot and Load offers 24 hour turnaround on new stages, including:

- ✓ Every lot in the stage plan
- ✓ Lot dimensions and area
- ✓ Easements
- ✓ Cross over
- ✓ Fall
- ✓ 3D envelope
- ✓ Setback
- ✓ Existing surface
- ✓ Finished surface
- ✓ Covenant rules



## Lot and Load Benefits



Allow Sales Agents to generate and publish packages.



Show package and siting options via Masterplans Unlimited.



Utilizes Runway's existing package costs and covenant rules.



View all possible options before creating.